



Printing TLPs from *Quick Tags*

Internet Explorer 11 Edition

Fairfax Imaging, Inc.
December. 2018

Fairfax Imaging Support

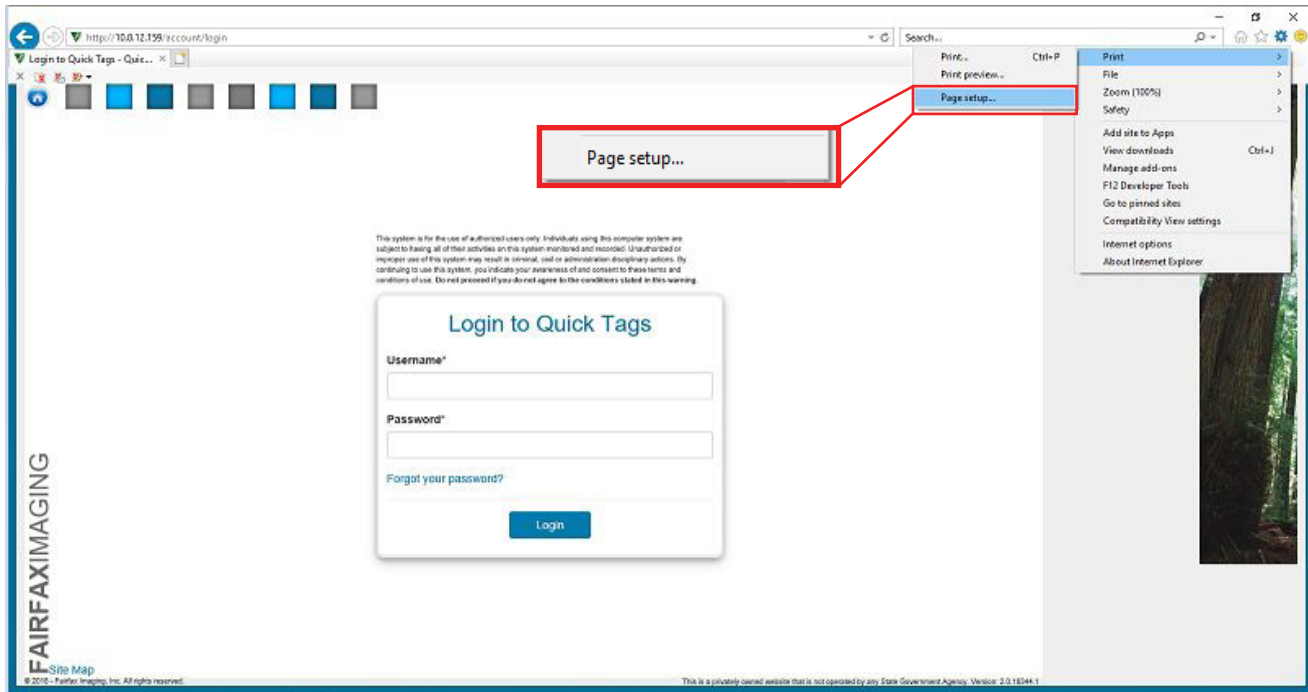
Email: helpdesk@fairfaximaging.com

Phone: 703.802.1220

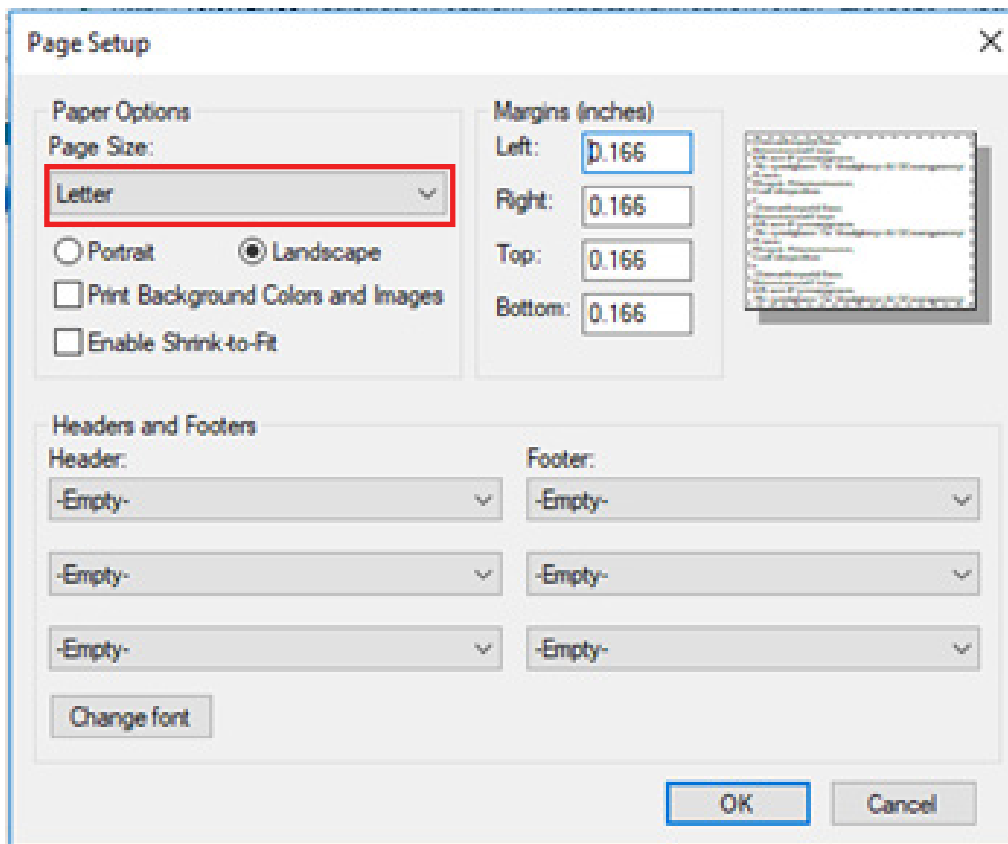
Toll Free: 1.877.627.8325

Fax: 813.881.1600

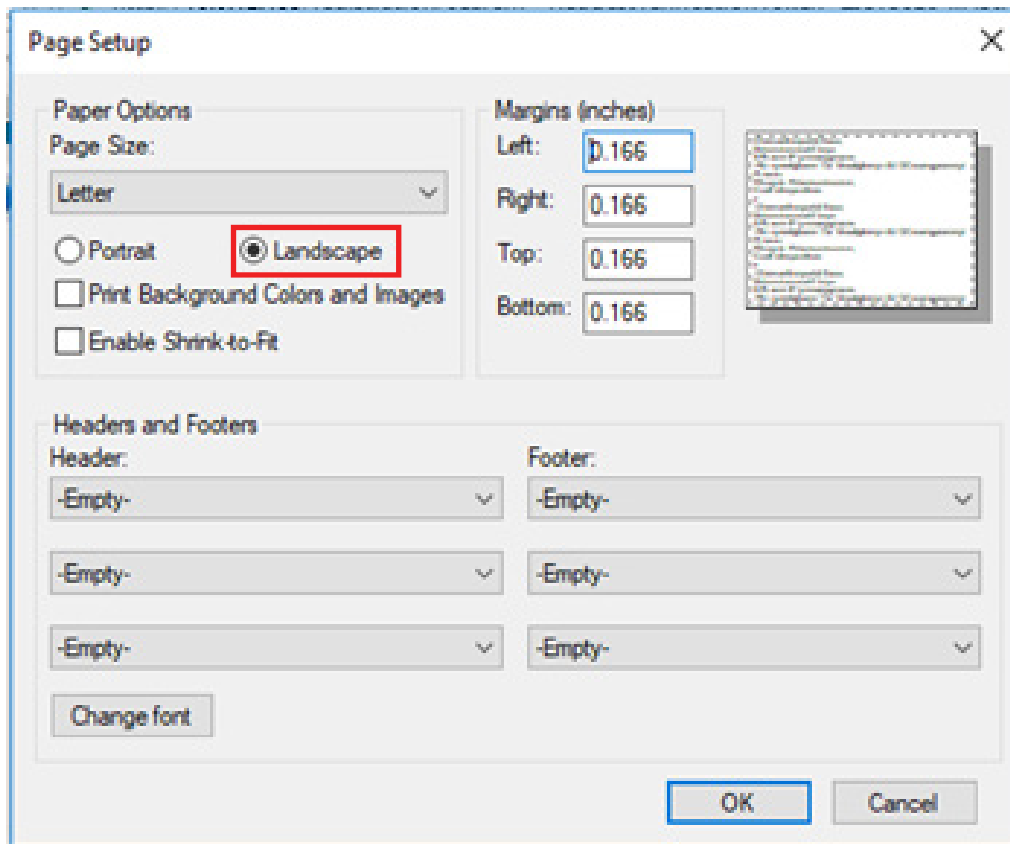
1. In the browser settings go to Print then to Page Setup.



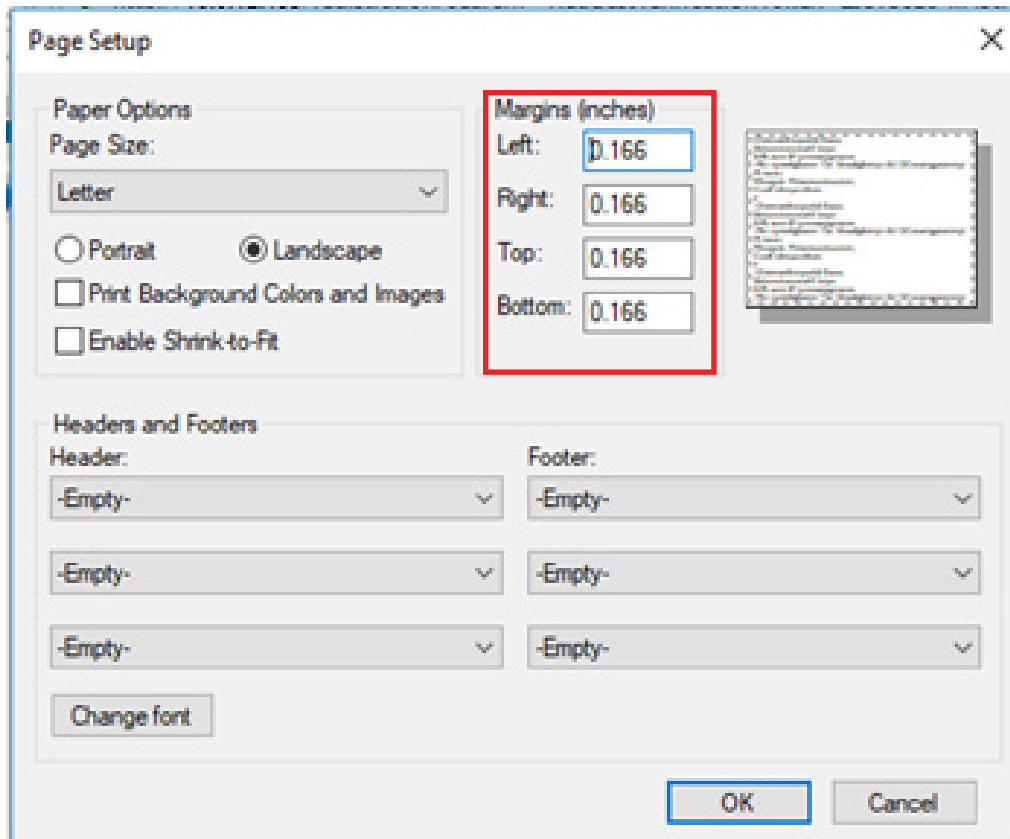
2. Set Page Size to Letter



3. Select Landscape mode.

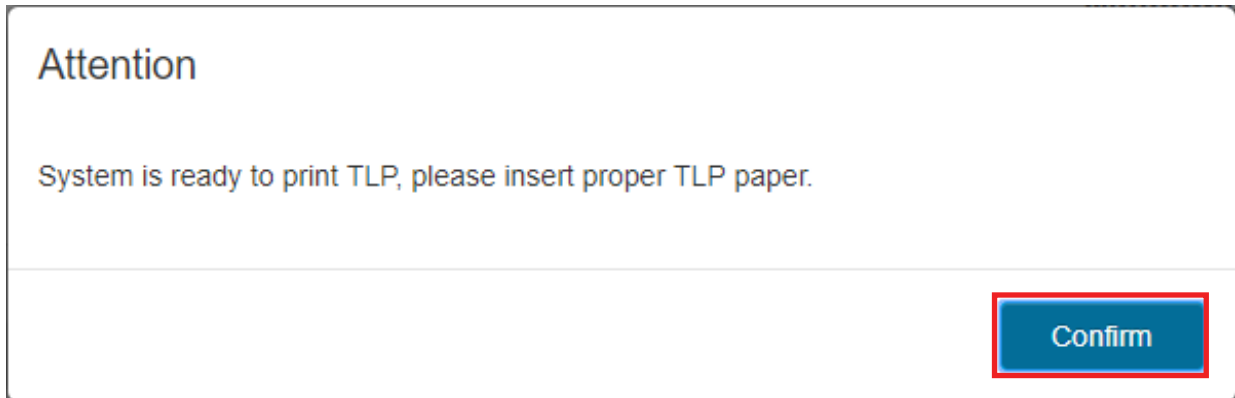


4. In all the margins fields, enter zero (0). They will default to 0.166.

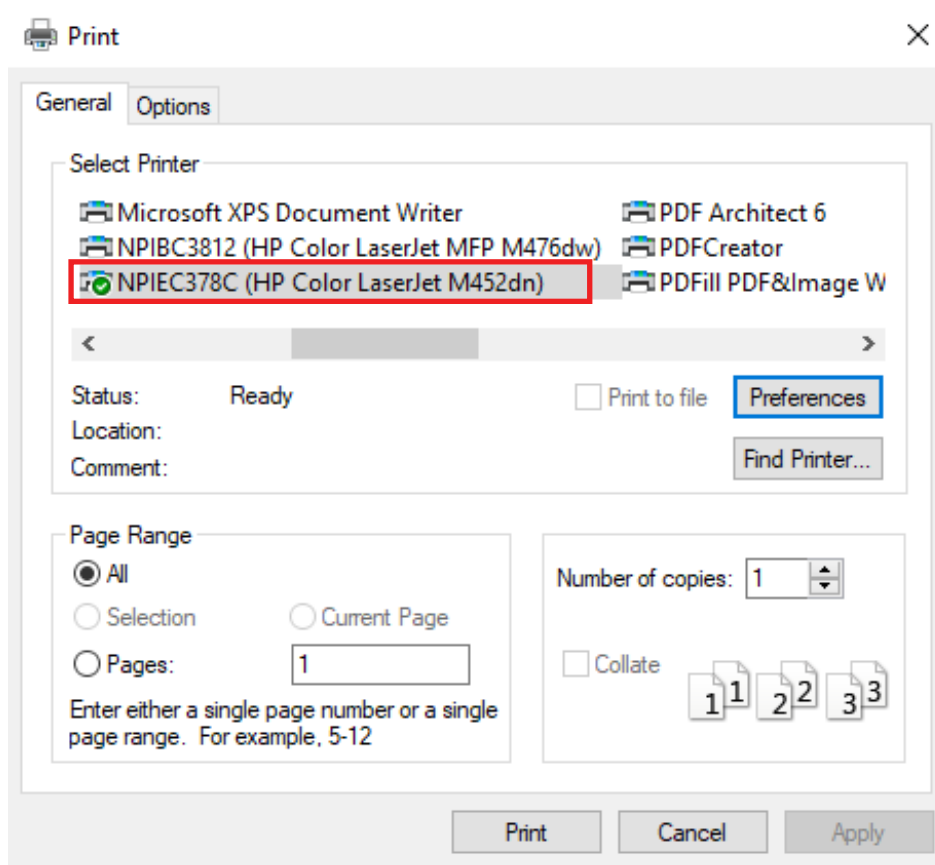


5. Select OK when finished.

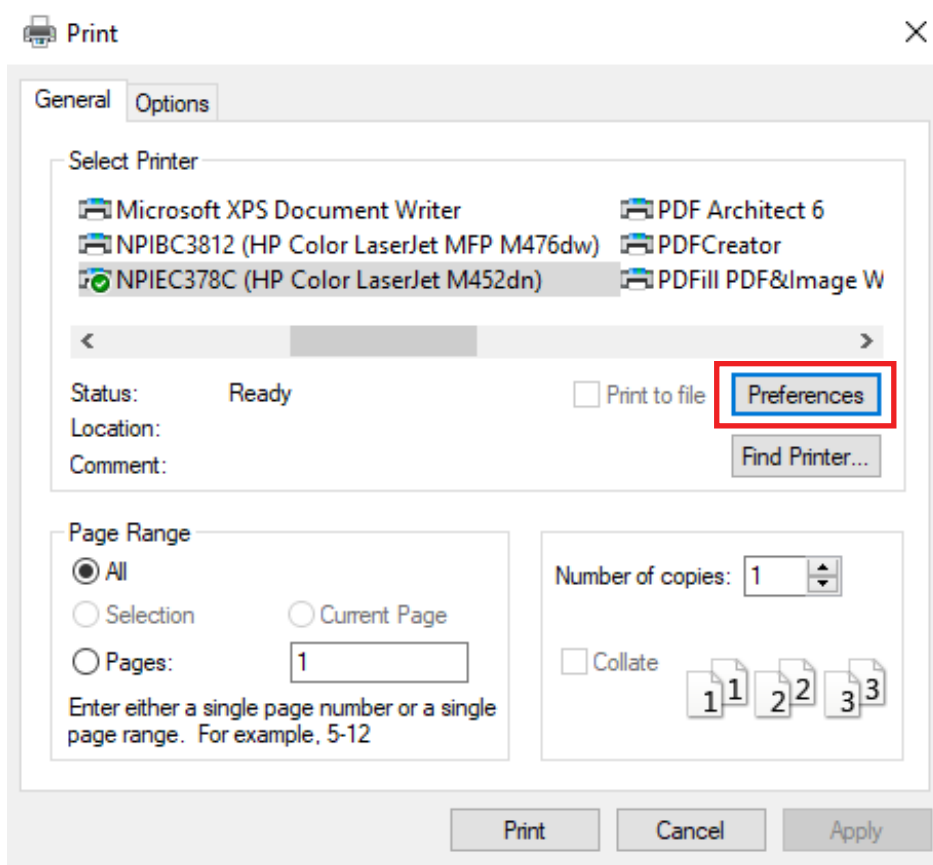
6. When printing the TLP load the TLP paper in the printer when prompted and select Confirm.



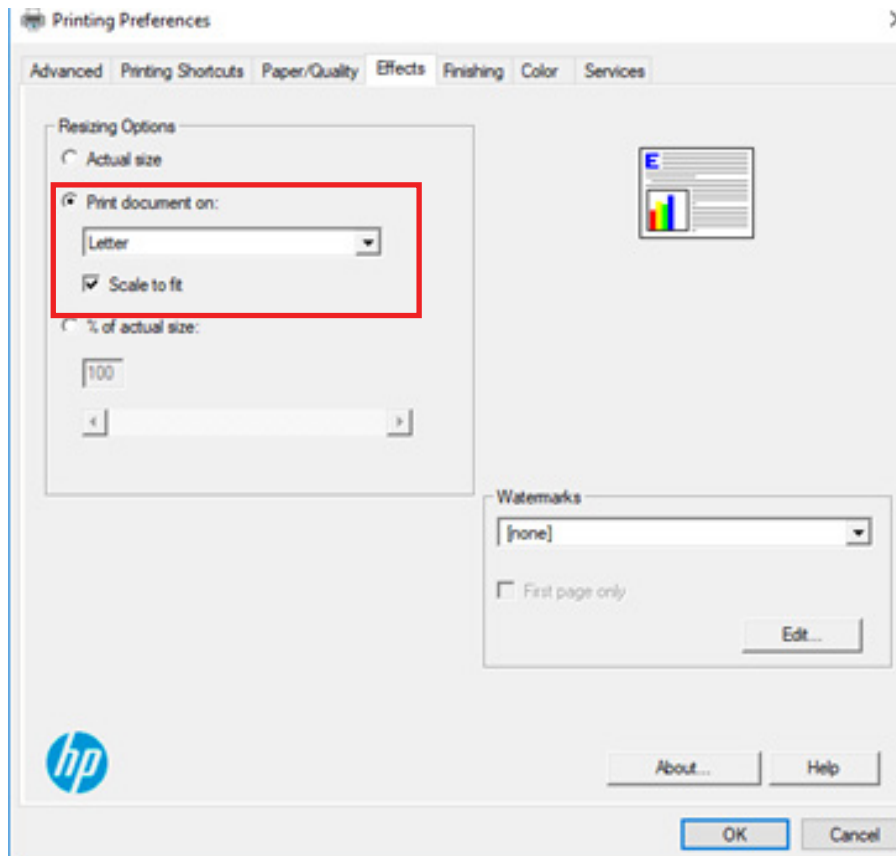
7. The Print command screen will display. Select the printer that has the TLP paper loaded.



8. Go to Print Preferences or Settings.



9. In Print Preferences ensure Resizing Options are set to Letter and Scale to Fit. *Note, all printers are going to having settings that vary.



10. Select Print.

