



# Printing TLPs from *Quick Tags*

 **Chrome Edition**

Fairfax Imaging, Inc.  
December. 2018

**Fairfax Imaging Support**

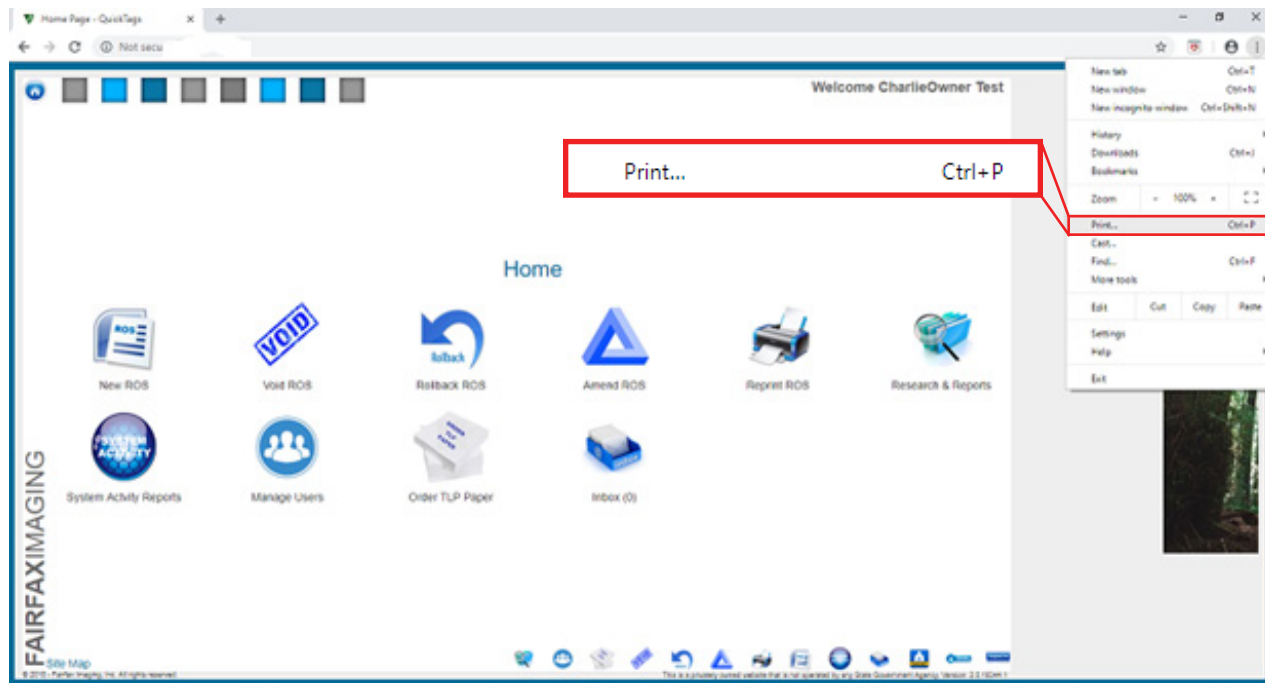
Email: [helpdesk@fairfaximaging.com](mailto:helpdesk@fairfaximaging.com)

Phone: 703.802.1220

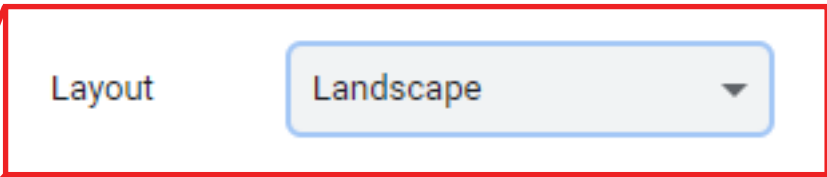
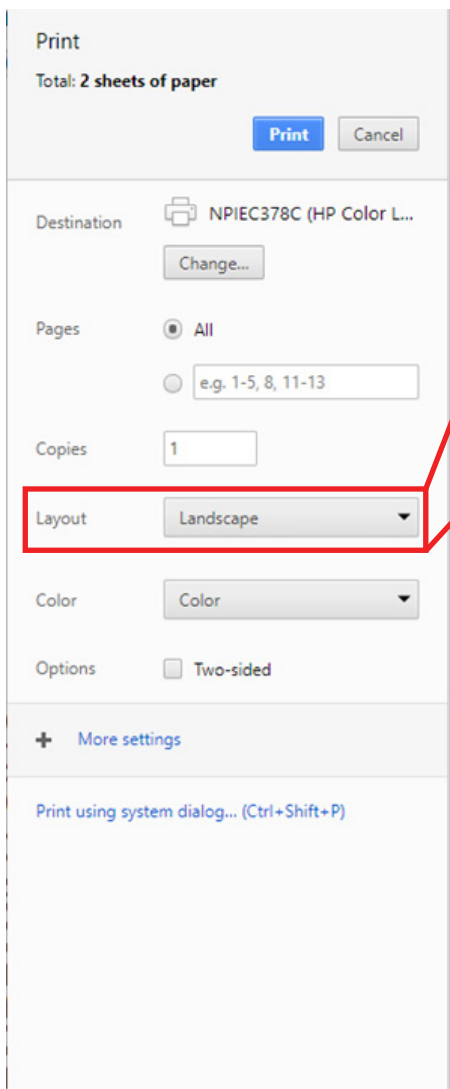
Toll Free: 1.877.627.8325

Fax: 813.881.1600


## 1. Go to Chrome Print settings



## 2. Set Layout to Landscape



Print  
Total: 2 sheets of paper

Destination  NPIEC378C (HP Color L...

Pages  All  
 e.g. 1-5, 8, 11-13

Copies

Layout

Color


Options  Two-sided

[Print using system dialog... \(Ctrl+Shift+P\)](#)

### 3. Select + More Settings

More settings

Print  
Total: 2 sheets of paper

Destination  NPIEC378C (HP Colo...

Pages  All  
 e.g. 1-5, 8, 11-13

Copies

Layout

Color

Paper size

Margins

Scale

Options  Two-sided  
 Background graphics

[Print using system dialog... \(Ctrl+Shift+P\)](#)

### 4. Set Margins to None (Paper size should be Letter)

Margins

5. Select **Cancel** to go back to the Home Page. When printing the TLP, ensure the TLP paper is loaded in the printer and select **Confirm**.

Attention

System is ready to print TLP, please insert proper TLP paper.


**Confirm**

6. In the **Print** command screen, ensure the printer with the TLP paper loaded is selected. Select **Print**

Print

Total: 2 sheets of paper

**Print** Cancel

Destination  NPIEC378C (HP Color L...  
Change...

Pages  All  
 e.g. 1-5, 8, 11-13

Copies

Layout

Color

Options  Two-sided

+ More settings

Print using system dialog... (Ctrl+Shift+P)