



Fairfax Imaging *Quick Modules Cashier* One Solution • One Workflow • One Provider

The *Quick Modules* Solution for Over-the-Counter Payments

Designed by Fairfax Imaging, *Quick Modules Cashier* takes advantage of the *Quick Modules 5.0* architecture to provide a powerful single vendor payment solution that allows payments to be taken directly from the customer. With *Quick Modules Cashier*, payments are consolidated using the same workflow and business rules as mail-in and electronic payments to provide a centralized approach for updating financial systems, end-to-end reporting, archive and research, auditing, Check 21 deposit, and system maintenance.

Key Less while Improving Customer Service

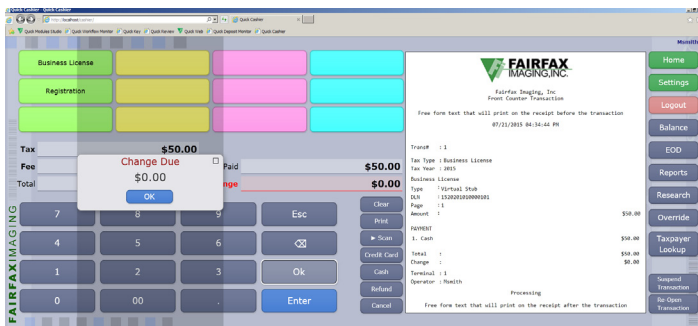
Quick Modules Cashier is based on the latest technology allowing your operators to speed through transactions reducing customer wait time. If the customer has a coupon or form, the operator simply drops the document into the scanner and *Quick Modules Cashier's* recognition technology will capture relevant data and automatically populate the fields on the screen. Checks are scanned capturing the amount automatically. All forms of payments including cash, checks, money orders, credit cards, and debit cards are accepted. Once balanced, the transaction is added to the *Quick Modules WorkFlow* for further processing and checks are queued for Check21 Deposit.



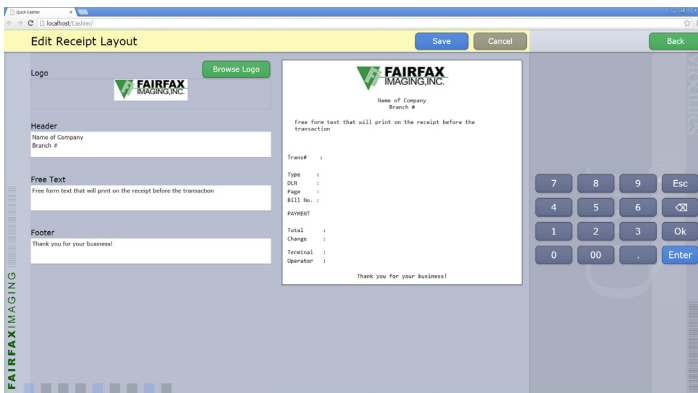
About Fairfax Imaging, Inc.

Fairfax Imaging, Inc., headquartered in Tampa, Florida, was founded in 1994 to provide high-quality products and integration services to the document, fax, and form processing industries. Since its inception, Fairfax Imaging has remained focused on its primary niche area of expertise.

Quick Modules stands as the system of choice for numerous Fortune 500 companies and government agencies. *Quick Modules* systems successfully process billions of transactions with data captured from documents, checks, electronic files, fax messages, and remittances.



Main Screen



Receipt Setup Screen



Quick Modules Cashier Workstation

Quick Modules Cashier Features

- Designed and developed by Fairfax Imaging. No integration or support delays due to third-party cashiering software.
- Workstations are web-based allowing easy deployment to multiple locations.
- Designed for ease-of-use, cashiering screens are compatible with touch-screen monitors. Entries can also be completed from the keyboard.
- Screens, receipt layout, and receipt logos are customized for each location with point-and-click ease.
- Configurable transaction buttons for fixed fee transactions such as a permit fee or an entrance fee.
- Recognition is provided by the scanning device as well as software within *Quick Modules* including machine print recognition (OCR), hand print recognition (ICR), mark sense detection, and Courtesy Amount/Legal Amount recognition (CAR/LAR), and 1D and 2D barcode recognition.
- Check data is checked against the *Quick Modules* database to ensure that it is not a duplicate. Internal and external databases can also be checked to make sure the account is not on the NSF hot list or is a known fraudulent account before the transaction is complete.
- Supporting documents can be scanned as an attachment to the transaction.
- Compatible with most industry-standard Point of Sale devices including scanners, receipt printers, card readers, PIN pad devices, cash drawers, customer displays, and touch screens.
- Safe and secure with data encryption and compliance with the latest industry security standards. Features and functions are limited by User ID.

