



Quick Modules • Imaging And Recognition Technology Overview

Fairfax Imaging, Inc. • www.fairfaximaging.com

Quick Modules, by Fairfax Imaging is a scalable, customizable forms and check processing solution. Processing millions of business transactions daily, Quick Modules uses rules based workflow along with sophisticated recognition technology and validation capabilities to process virtually any document, form or check within a common architecture. The system utilizes structured, semi-structured and unstructured recognition techniques to efficiently and accurately capture data. More importantly, the solution is backed by an experienced, industry focused Fairfax Imaging team that provides a total commitment for end-to-end customer service and support. This ongoing commitment is shown by an ever-growing client list within government and Fortune 500 corporations.

Quick Modules Offers Efficient Business Automation

Our Quick Modules recognition process enables organizations to efficiently automate business processes, dramatically minimize manual operations associated with document processing and data capture and increase overall productivity. Quick Modules delivers powerful recognition techniques to transform information from various types of paper forms or documents into electronic data and transfer it to business applications and databases.

Structured

Document data is in a consistent location and provides a high level of accuracy and speed. User-defined templates identify the data by its position on a form.

Semi-Structured

Document data is consistent but the location can vary and therefore, word identification, groups of words or patterns determine the data to extract. Examples of semi-structured documents are W-2s, Labor Department wage reports, web based forms and Tax forms.

Unstructured

Document data is inconsistent and can be virtually anywhere, therefore words or patterns are used to identify data to extract.



Fairfax Imaging Quick Modules • Imaging And Recognition Technology Overview

One Solution • One Workflow • One Provider

Benefits

- ▶ Process efficiencies through intelligent character recognition.
- ▶ Automated form identification and classification reducing manual intervention.
- ▶ Reduced operational costs through indexed image retrieval.
- ▶ Improved accuracy through user defined rules-based validation.
- ▶ Electronic presentment of checks (Check 21 or ARC) reducing deposit time frames.

Industries Served

- Public Sector - Federal, State & Local
- Healthcare
- Pharmaceutical
- Banking
- Financial Services
- Transportation
- Order Entry and Fulfillment
- Service Bureau

Primary Applications

- Business Process Automation
- Electronic Check Presentment
- Revenue/Tax Processing
- Labor Claim Processing
- Motor Vehicle Registration
- Order Entry Applications
- Pharmacy Mail Order
- Prior Authorization Requests
- Remittance Processing
- Remote/Distributed Image Capture
- Subscription Fulfillment

Quick Modules Reads a Wide Variety of Document Types

Quick Modules provides the opportunity for companies to automatically process all incoming mail, automate their workflow, and perform recognition on forms that are structured, semi-structured and unstructured. Quick Modules provides the best in character recognition rates and provides a single platform for all your application needs. In addition, when two recognition engines are involved, voting is used and the best result is provided.

MICR

A standard magnetic-ink character format, MICR is used in banking to gather routing, account and check numbers for processing checks and money orders.



CAR/LAR

Hand written amounts on checks include the courtesy amounts (CAR) and legal amounts (LAR) on payment items such as checks and money orders. This information is read to determine deposit amounts when performing automated electronic check presentation methods such as Check 21 or ARC processing.



The Fairfax Imaging Solution

Fairfax Imaging recognizes that changing mission critical processes must be planned and organized in order to ensure success.

A full range of professional services helps you realize immediate benefit from your system. Our Support organization offers one central location to get the support you need so you can focus on getting your job done fast and efficiently.

Barcodes (1D, 2D, Postal, QR)

Multiple barcode formats are captured. These barcodes can be located anywhere on the document and often provide the highest of read rates.



Optical Character Recognition (OCR)

Transforms document data into usable text using matrix matching analysis and sophisticated algorithms to capture machine printed characters in virtually any font style.



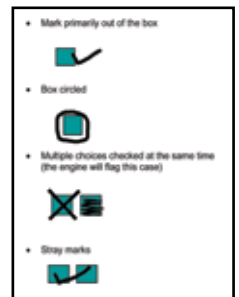
Intelligent Character Recognition (ICR)

Advanced neural network techniques are employed for handprint and handwritten text recognition.



Optical Mark Recognition (OMR)

Multiple levels of grayscale recognition are used to identify the presence or absence of marks on forms. This technique is good for surveys and documents that use check boxes for selection.



Training Implementation

Technical Support Documentation

Project Management Consulting

Hardware Software

