

Payment Processing for Utilities

Fairfax Imaging *Quick* Modules for Utilities

One Solution • One Workflow • One Provider

Quick Modules from Fairfax Imaging, Inc. is one of the most versatile systems in the marketplace today for document and payment processing. Optimized for Utility Processing, *Quick* Modules not only includes traditional Stub and Check processing but also accepts payments from any source including:

- **Mail in payments**
- **Check and List Agency Payments**
- **Internet Payments**
- **Over the Counter Payments**
- **Phone Payments**
- **Smartphone Mobile Payments**

Utility Processing

It is a challenging task to receive and post payments with so many payment options in today's marketplace. Built on the latest technology, *Quick* Modules takes advantage of the latest trends in the payments market. From the traditional customer that prefers to mail in a payment to the millennial that prefers to pay using their mobile phone, *Quick* Modules will consolidate all payment types into a single system.

Integrated Payments

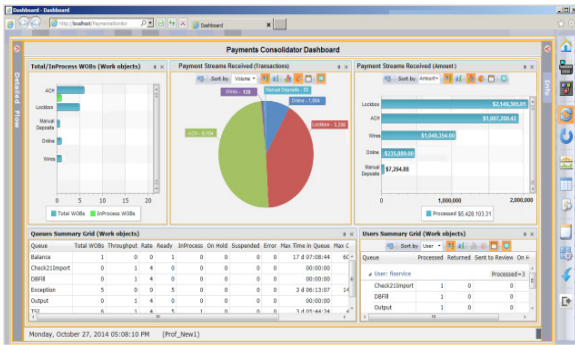
All payment types are processed using intelligent workflow and are consolidated into a single database. All payment types are processed using common business rules, database lookups, and validations for balancing, handling exceptions, posting, reporting, archive, and audit. By consolidating all payment types, your people will work smarter and maximize efficiency while reducing your cost.

An easy to use dashboard allows managers and supervisors to manage incoming work and track progress step by step throughout the system as well as monitor the operations staff.

About Fairfax Imaging, Inc.

Fairfax Imaging, Inc., headquartered in Tampa, Florida, was founded in 1994 to provide high-quality products and integration services to the document, fax, and form processing industries. Since its inception, Fairfax Imaging has remained focused on its primary niche area of expertise.

Quick Modules stands as the system of choice for numerous Fortune 500 companies and government agencies. *Quick Modules* systems successfully processes billions of transactions with data captured from documents, checks, electronic files, fax messages, and remittances.



Web-based graphical WorkFlow Monitor

Quick Modules is designed for Utilities

- A modern web-based design using the latest Microsoft® technology.
- Point-and-click user interfaces designed for high productivity.
- High Volume? Not a problem. The architecture scales from hundreds of payments to millions of payments per day.
- Designed for easy web-services connection to legacy databases to handle special cases like expediting the posting of payments for customers that are scheduled for service disconnect.
- *Quick Mobile Capture* allows field personnel to capture a payment with their smartphone or tablet and scan it to the workflow instantly to prevent an interruption in service.
- Sized to fit your needs. *Quick Modules* supports a variety of scanners including high volume OPEX® and ibml scanners, departmental scanners, and tabletop scanners. Scanners can be located across the room or across the country.
- Virtual batching means no presorting required before scanning.
- Data is safe and secure with state-of-the-art encryption and security.

One Workflow for All Your Payments

Electronic Payments

High Speed High Volume

Desktop & Remote Site

Smartphone & Tablets

Walk-up Payments

- ACH
- Internet
- 3rd Party Lockbox
- 3rd Party Bill Pay

...and more

